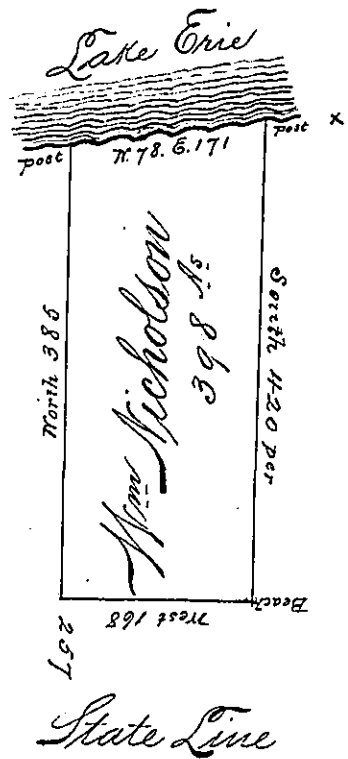


Hannah Nicholson

Seth Nicholson



State Line

*Situate on Lake Erie in Allegheny County District
 No. 1 Survey d. 6th June 1794 to William Nicholson on
 his Warrant dated 13th April 1792 Containing three
 hundred and ninety eight acres and allowe*

Thos. Rees D.S.

*Genl. Brodhead, Esq^r }
 Sur^r. Gen^l }*

*IN TESTIMONY that the above is a copy of the original remaining on file in the
 Department of Internal Affairs of Pennsylvania, made con-
 formably to an Act of Assembly approved the 16th day of
 February, 1833, I have hereunto set my Hand and caused
 the Seal of said Department to be affixed at Harrisburg, this
 seventeenth day of July 1895*

James W. Latta
 Secretary of Internal Affairs.